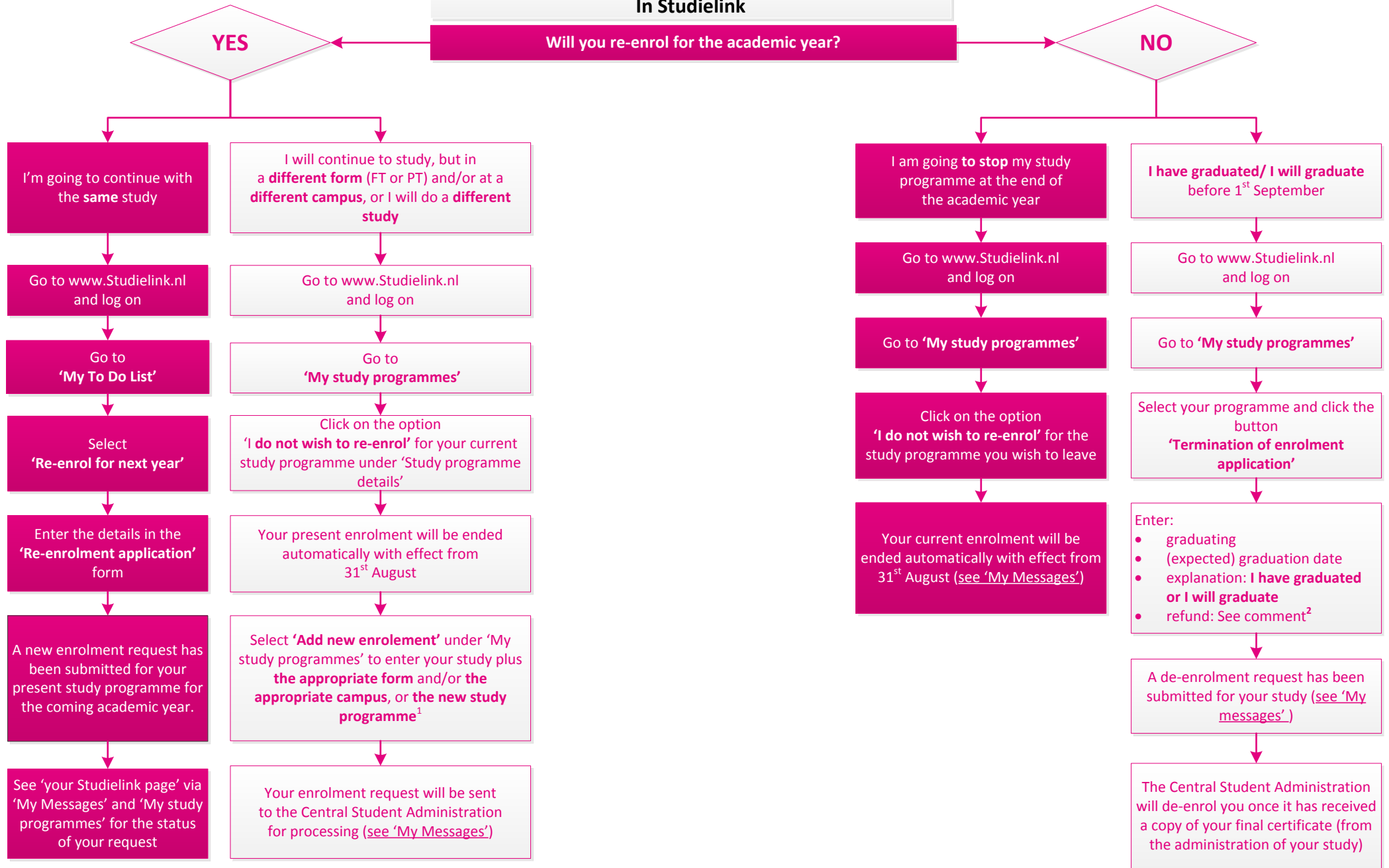


Step-by-step guide to submit a request In Studielink



1 The electives that you have chosen for Periods 1 & 2 may not be possible any more. Therefore, please contact your study coach.

2 A refund (if applicable) must be requested when you apply your final certificate and not via Studielink.

In case you are experiencing problems when submitting your re-enrolment request in Studielink,
please contact the Central Student Administration on 0900 464 655 263