



# Enrolment and deregistration rules 2026-2027

Central Student Administration  
Version April 2026

Adopted by the Executive Board on 2 June 2026, following a positive recommendation by the HMR on 29 May 2026

# Table of contents

<b>Introduction</b>	<b>5</b>
<b>1. Applying for enrolment</b>	<b>7</b>
1.1 Brief overview of the enrolment procedure	7
1.2 Application deadlines	8
1.3 Applying for a higher year or a short-track programme	9
1.4 Applying for a degree programme with an enrolment quota	9
1.5 Applying after 1 August but no later than 31 August	10
1.6 Applying for the February intake	11
1.7 Starting a degree programme during the year	11
1.8 Enrolment requirements	14
1.9 Re-enrolment	15
1.10 Enrolment refused	15
<b>2. Prior education and entry requirements</b>	<b>17</b>
2.1 HAVO and VWO: subject cluster and/or subject requirements	17
2.2 MBO level 4 diploma	17
2.3 HBO first-year or WO-first-year diploma, HBO or WO Bachelor's degree certificate, or Associate degree certificate	17
2.4 Other Dutch diplomas	18
2.5 Foreign diploma	18
2.6 Diploma not received on time	18
2.7 Specific prior education requirements and other requirements	19
2.8 Work requirements when doing a part-time programme	20
2.9 Work-study programmes	20
2.10 Primary education teacher-training college(Pabo) lateral entry	20
2.11 Admission to a Master's programme	20
2.12 Language requirement for a degree programme taught in Dutch	21
2.13 Language requirement for degree programmes taught in English	21
2.14 Entrance exam	22
2.15 Deficiency test	22
<b>3. Intake (study check)</b>	<b>24</b>
3.1 To whom does the Intake apply?	24
3.2 Compulsory components of the Intake	24
3.3 Higher Education application date vs Intake recommendation and possible enrolment	25
3.4 Exceptions for applications between 1 May and 31 August	26
3.5 Applying in the interim and for the February intake vs Intake	26
3.6 Failure to complete a compulsory Intake	27

<b>4.</b>	<b>Tuition fees</b>	<b>29</b>
4.1	Statutory tuition fees	29
4.2	Institutional tuition fees	30
4.3	Exceptions to statutory and institutional tuition fees	30
4.4	Interim changes	30
4.5	Multiple degree programmes	31
4.6	Setting up a direct debit mandate in Studielink	31
4.7	Collection dates	32
4.8	Non-payment	32
4.9	Examination fees for external students	32
4.10	Determination of tuition fees	33
<b>5.</b>	<b>International students</b>	<b>35</b>
5.1	EEA students	35
5.2	Non-EEA students	35
5.3	Conditions for a residence permit for study purposes	35
5.4	Notification to IND of deregistration of students with a residence permit for study purposes	36
5.5	Consequences for the residence permit in case of a transfer to Inholland	36
5.6	Registration in the Personal Records Database in the Netherlands	36
5.7	Work permit for non-EU/EEA students	37
5.8	International Office	37
5.9	Student finance/tuition fee loan	37
5.10	Knowledge grant	37
5.11	Code of Conduct for International Students in Dutch Higher Education	38
<b>6.</b>	<b>Deregistration or transferring</b>	<b>40</b>
6.1	Deregistration at the end of the academic year	40
6.1	Deregistration on request in the course of the academic year	40
6.4	Binding study advice (BSA)	41
6.5	What are the rules for deregistering when you graduate?	42
6.6	What is the amount of the tuition fee refund?	42
6.7	Consequences of deregistration	43
<b>7.</b>	<b>Complaints and disputes</b>	<b>47</b>
7.1	Objection procedure	47
7.2	Appeal procedure	47
7.3	Student counsellor	47


# Introduction

The Central Student Administration (CSA) handles all student enrolment and deregistration matters. This document specifies the enrolment and deregistration rules for the 2026–2027 academic year, which were drawn up by the Central Student Administration to inform you about the enrolment and deregistration procedure at Inholland University of Applied Sciences. It contains extensive information about:


- applying for enrolment;
- the prior education and entry requirements;
- the Intake;
- tuition fees;
- International students;
- deregistration or transferring;
- the objection and appeal procedure.

The detailed implementation rules and conditions can be found in the CSA Guide. The CSA Guide can be found in [Iris](#) and on the [website](#).

If you have any questions about applying, enrolling and/or deregistering, feel free to contact the Central Student Administration.

 +31 88 466 0000

 [csa@inholland.nl](mailto:csa@inholland.nl)

 +31 6 21 11 55 55



# 1. Applying for enrolment

You can apply for enrolment in an Inholland University of Applied Sciences degree programme through [Studielink](#). You will need a [DigiD](#) to log into Studielink. You can only apply for a DigiD if you're officially registered in a Dutch municipality. If you have a home address outside the Netherlands, you can create a Studielink account using your email address by scanning your ID card.

## 1.1 Brief overview of the enrolment procedure

1. Once you're logged in to Studielink, you can submit an application for enrolment. Make sure that your contact details in Studielink are correct, so that you don't miss any messages from us.
2. A few days after you've applied, Inholland will send you a number of emails to let you know how to complete your enrolment and activate your Inholland account.
3. After creating your account, you can log into the Self-Service tool. The Self-Service tool contains an overview of the enrolment requirements that apply to you. The enrolment requirements that apply to you depend on your choice of degree programme and your personal situation.
4. In many cases, the [Intake](#) is a compulsory part of the application procedure.
5. Your Intake page in the Self-Service tool lists the various Intake components that apply to you and the various deadlines.
6. You pay your tuition fees by setting up a [direct debit authorisation](#) in Studielink. If you apply early in the academic year, you'll be notified as soon as this is possible. In other cases, you can do this straight away.

Make sure that you've met all the enrolment requirements by 31 August at the latest (or by 31 January for a February start). Once you've completed your enrolment, your student ID card will become available in the Inholland Iris app and you can download your proof of enrolment through the Self-Service tool.

Would you like to apply for the [Master's of Midwifery](#) (a collaboration between Zuyd University of Applied Sciences, Rotterdam University of Applied Sciences and Inholland University of Applied Sciences)? If so, when you apply via Studielink, your application will initially be sent to Zuyd University of Applied Sciences.

Zuyd will send your details and registration to us once you are fully enrolled.

All communication about your enrolment will be conducted through them.

## 1.2 Application deadlines

# Application deadlines for 2025-2026

### By 15 January 2026 at the latest

Degree programmes with an enrolment quota: [Midwifery](#) and [Dental Hygiene](#) (see section [1.4](#))

### Before 25 February 2026

The degree programme in [Music](#) and the [Electronic Music](#) Associate degree programme, on account of the auditions (see section [2.7](#))

### By 1 May 2026 at the latest

Application for degree programmes requiring an Intake because of the right of admission/entitlement to an Intake

### After 1 May, but by 31 August 2026 at the latest

You can apply for enrolment. There is no right to admission for degree programmes that require an Intake. No Intake requirement or admission right? See [3.1](#) and [3.4](#)

### After 1 August, but no later than 31 August 2026

Application only for non-Intake-obligated and Intake-obligated excepted groups: See [3.1](#) and [3.4](#)

### By 15 January 2027 at the latest

Degree programmes starting in February 2027, see section [1.6](#)

### 1.3 Applying for a higher year or a short-track programme

- **Applying for a higher year**

If you wish to enrol in the second year or a higher year of a degree programme, you can indicate this in Studielink (provided the programme allows this option). This is conditional upon your obtaining permission from the degree programme to enter in a higher year.

If you also wish to be exempted from the first-year phase, you can submit a request for exemption from this phase to the Examinations Board via Iris. You can't enrol in a higher year for degree programmes starting in February.

**Note!** Until it is clear that you meet the conditions, the Central Student Administration will treat your application as an application for enrolment in the first year.

- **Applying for a short-track programme**

In some cases, you can enrol in a short-track variant. To enrol in a short-track programme, you must submit a copy of the Examinations Board's decision containing all the exemptions required for access to the programme. If you hold a higher professional education (HBO) Bachelor's diploma, the CSA will take care of the evaluation.

### 1.4 Applying for a degree programme with an enrolment quota

An enrolment quota applies to the Dental Hygiene and Midwifery degree programmes. This means that only a limited number of students will gain admission to these degree programmes. This might be because of shortages on the labour market, a lack of suitable work placement positions or limited training facilities. The government sets the number of places on the degree programme. In order to determine whether you qualify for admission, you must take part in the selection procedure. The degree programmes themselves will select a number of candidates that have demonstrated sufficient aptitude from among all the applicants. As you're therefore not assured of a place when you apply, you should always have a back-up plan in case you're not offered a place. For more information, see Section 1.11 of the [CSA guide](#).

To enrol and take part in the selection procedure for these degree programmes, you must submit an application through Studielink by 15 January 2026. You can read more about the selection procedure and criteria here:

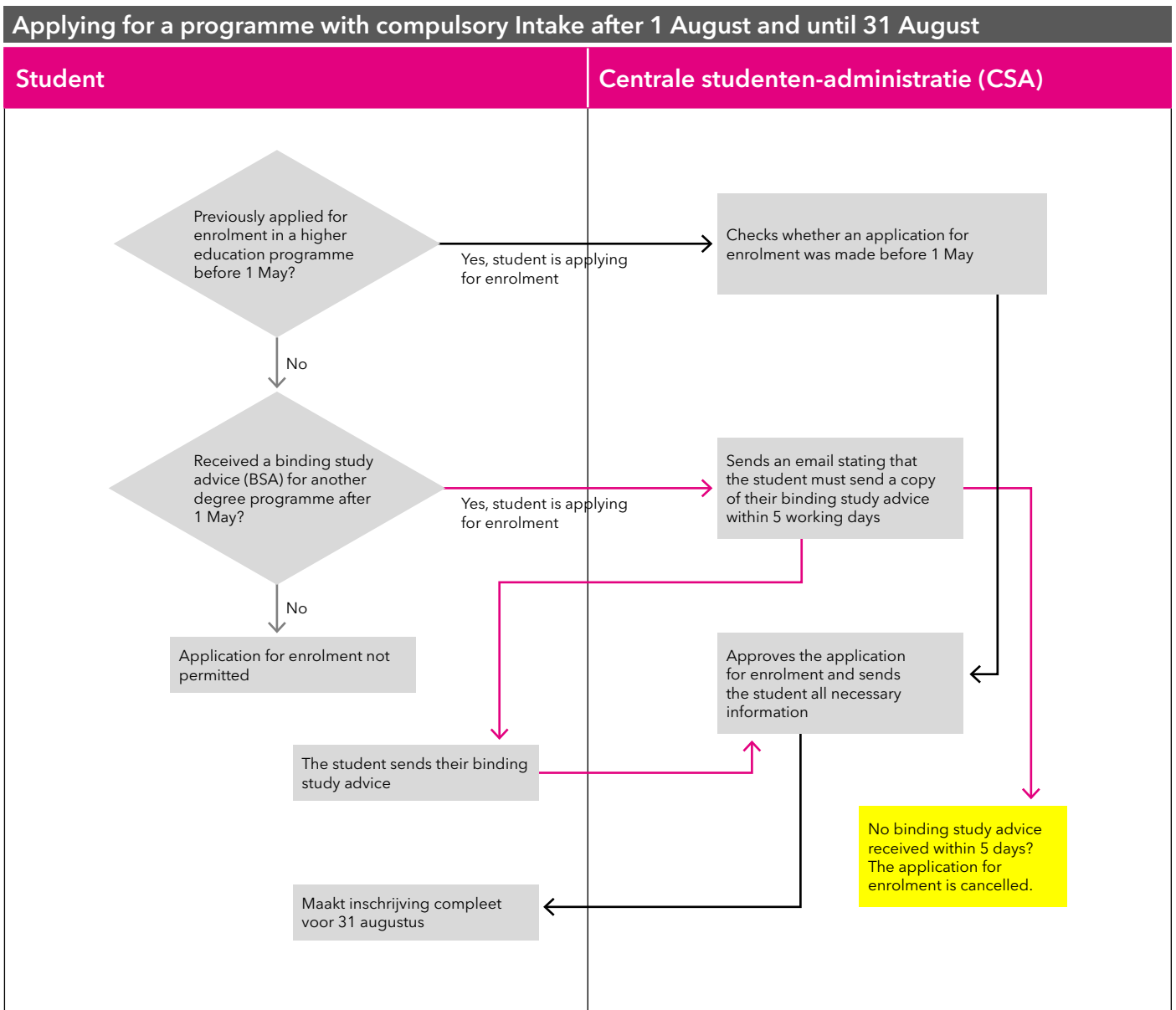
- [Dental Hygiene](#);
- [Midwifery](#) (website of the Midwifery Academy Amsterdam Groningen).

- Applying for a higher year on a degree programme with an enrolment quota**  
 You can only enrol in the second or a higher year of a degree programme with an enrolment quota at Inholland if you have met the BSA standard for the same programme with an enrolment quota at Inholland or have already successfully completed the first year of this programme. You can only enter a higher year in consultation with, and with the permission of, the degree programme. For further information, see Section 1.11.2 of the [CSA guide](#).

### 1.5 Applying after 1 August but no later than 31 August

If you want to apply after 1 August for a programme for which there is no compulsory Intake, you can do so until 31 August. Please see [3.1](#) for more information.

When a programme does require an Intake, you cannot apply for that programme after 1 August. If you fall under the established (see [3.4](#)) and wish to apply after 1 August (until 31 August at the latest), the following procedure applies:



## 1.6 Applying for the February intake

Under what circumstances can you start with your Inholland degree programme in February?

- If there is a February intake for the degree programme. From October, our website will state which degree programmes have a February intake.
- You may not start a degree programme (or a programme with the same first-year programme) in February for which you were enrolled in the same or previous academic year.

**Note!** If you start in February, you always start in the first year of the degree programme. In some cases, you will still need to take part in an Intake; for more information, see [3.5](#). Even if a student starts in February, their academic year will run up to 31 August and they will need to re-enrol to continue the programme from 1 September.

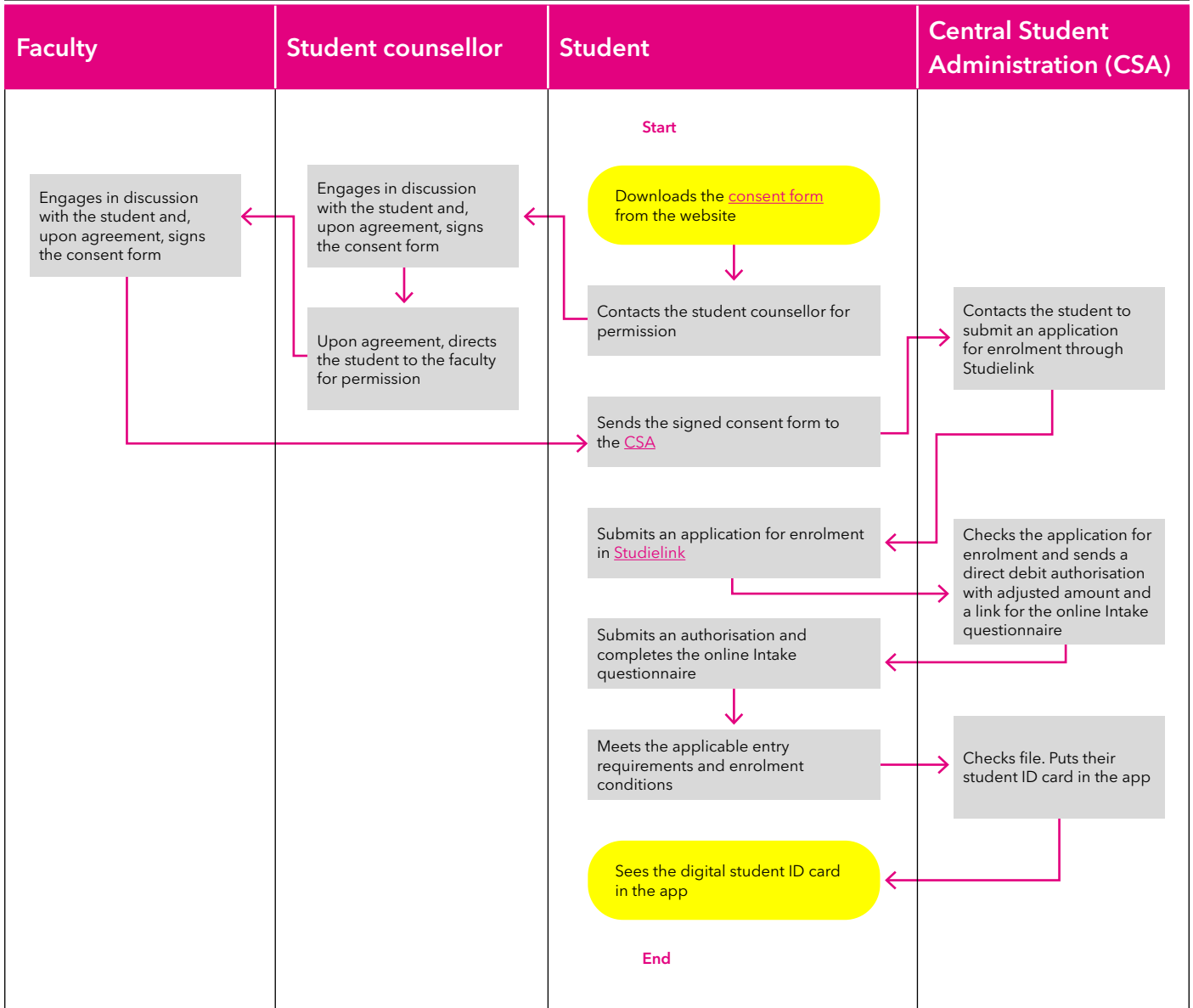
For degree programmes with a February intake, the final application deadline is 15 January 2027. The final date by which you must meet all the enrolment requirements is 31 January 2027 (see Section [1.8](#)).

## 1.7 Starting a degree programme during the year

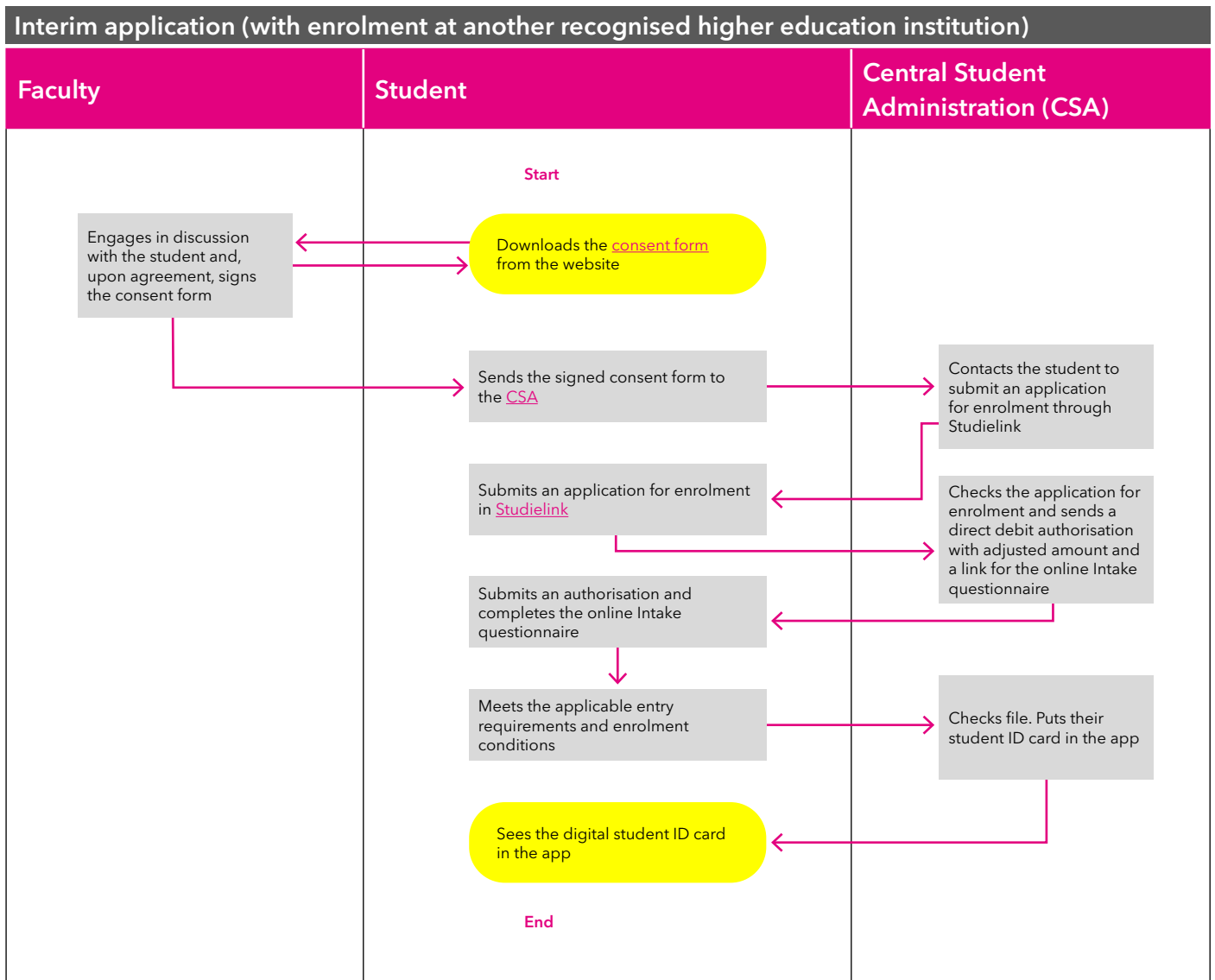
In some instances, you may have had special reasons for failing to enrol on 1 September or 1 February and may not want to wait until the next regular enrolment opportunity. This is possible only in exceptional circumstances, such as illness or if you are enrolled at another accredited institution of higher education and would like to transfer to Inholland.

If you are not enrolled at another accredited institution in the relevant academic year, you should first schedule an appointment with a [student counsellor](#). If the recommendation is positive, you should subsequently make an appointment with the degree programme and then take the following steps:

Interim application (without enrolment at another accredited higher education institution)



If the student is or was enrolled at another institution during the relevant academic year, please follow the steps below:



Naturally, you must also meet all the entry and enrolment requirements that apply. In many cases, you are required to have a positive Intake recommendation if this follows from the regular Intake rules.

If you re-enrol (on the first day of the month) in the course of the same academic year in which you deregistered, you must pay tuition fees again. The statutory tuition fees amount to one twelfth of the tuition fees for each month of enrolment, so interim enrolment on 1 February means seven twelfths of the tuition fees (until 31 August). From the date on which you re-enrol in a full-time or work-study programme, you may again be entitled to student finance and a student travel product. You must request these personally from the [Education Executive Agency \(DUO\)](#) in advance.

## 1.8 Enrolment requirements

The enrolment requirements are summarised below. The date by which you must meet all enrolment requirements is 31 August 2026. You'll be enrolled with effect from 1 September. If you wish to enrol in a degree programme that starts on 1 February 2027, you must meet all enrolment requirements by 31 January 2027.

### 1. Prior education diploma

Before you can start with the degree programme of your choice, you must have obtained a diploma that grants access to it. In some cases, a positive result on an entrance exam organised by Inholland will suffice. [Chapter 2](#) contains extensive information about the prior education and entry requirements.

### 2. Positive Intake recommendation

If you submit your application on 1 May at the latest, you're entitled to admission. In that case, you may also start if you've received a 'no match' recommendation. Turn to [Chapter 3](#) for more information on the Intake and on whether this condition applies to you.

### 3. Direct debit authorisation

You can set this up in Studielink. In [Chapter 4](#), you will find information on the amount of tuition fees.

### 4. ID card

If your personal details in Studielink have not yet been verified, you must upload a copy of your ID card through the Self-Service tool. If you log into Studielink using DigiD or if you have created your account in Studielink by scanning your identity document, and have not made any changes to the data read out, your identity will be verified automatically.

### 5. Valid residence document

If you are not a citizen of a country in the European Economic Area (EEA) or Switzerland, you may be required to upload a copy of the residence document that entitles you to remain in the Netherlands. We need this information to determine whether you qualify for statutory tuition fees, for example. For more information on residence documents and how to apply for them, turn to [Chapter 5](#).

### 6. Proof of a sufficient command of the Dutch or English language

If you obtained your prior education diploma abroad, you must provide proof that you have a sufficient command of the language in which the degree programme is taught. For more information on this, see Sections [2.12](#) and [2.13](#).

### 7. Admission following selection

An enrolment quota applies to the Dental Hygiene and Midwifery degree programmes.

This means that only a limited number of students will gain admission to these degree programmes. For more information on selection and placement, see Section [1.4](#).

## **8. Meeting additional requirements, including entry requirements**

Additionally, specific requirements apply for the Midwifery, Music, Primary Education Teacher-Training College (Pabo) and Sport Studies degree programmes and the Electronic Music Associate degree programme. These requirements are listed in Section [2.7](#).

## **9. No payment arrears**

If you want to start in September, you must not be in payment arrears with us on 1 August. If you want to start in February, you must not have any payment arrears on 1 January. See Section [4.8](#).

## **10. Recent passport photo for your student ID card**

While not an official enrolment requirement, this is necessary so that your photo can be shown on your student ID card in the MyInholland app.

If you fail to meet the enrolment requirements that apply to you in time, you won't be enrolled. You are entitled to student finance only if you are enrolled.

If you were unable to be enrolled, this will in most cases mean that you'll only be able to enrol again in September of the following academic year. The Central Student Administration is the only department at Inholland University of Applied Sciences that may process and make decisions on enrolment applications on behalf of the Executive Board.

## **1.9 Re-enrolment**

Each year, you must re-enrol for the next academic year by 1 September. This date applies even if you only started your degree programme in February. You can re-enrol through Studielink as early as mid-May. Studielink will notify you as soon as it's possible to do this. In order to complete your re-enrolment, you must also have set up your direct debit authorisation before 1 September, and you may not have any payment arrears.

## **1.10 Enrolment refused**

You won't be enrolled if you fail to meet the enrolment requirements by the closing date. Your enrolment will also be refused if you applied through Studielink for a degree programme track that will not start. If this happens, you'll be informed of this as soon as possible. In addition, enrolment will be refused in some special cases, for instance if you fail to respect the principles or the aim of Inholland, or if your conduct or remarks show that you are unsuitable to practise the profession for which the degree programme would prepare you.



## 2. Prior education and entry requirements

You're eligible for admission to a higher professional education (HBO) Bachelor's programme or Associate degree programme if you hold a senior general secondary education (HAVO) diploma, a pre-university education (VWO) diploma or a senior secondary vocational education (MBO) level 4 diploma. You must have earned this diploma by the deadline, i.e. by the month in which you'll start with the degree programme.

### 2.1 HAVO and VWO: subject cluster and/or subject requirements

If you hold a HAVO or VWO diploma, requirements may be imposed on the subject cluster and/or subjects. The Central Student Administration (CSA) will check whether your diploma meets the subject cluster and/or subject requirements that currently apply. If this is not the case, there is a deficiency (shortcoming). You may have already made up for the deficiency by taking additional courses. The CSA will only be able to provide you with this information after you've submitted an application for enrolment through Studielink and it has checked your diploma. You must do so before 1 June 2026 to give you time to potentially sit a deficiency test if you do not meet the requirements. You can find more information in Section [2.15](#). For more information on HAVO and VWO subject cluster and subject requirements, [click here](#).

### 2.2 MBO level 4 diploma

MBO level 4 diplomas provide admission to all Bachelor's programmes and Associate degree programmes, but certain degree programmes also require that applicants meet the additional or further specific prior education requirements stated further on in this document. After all, a lack of specific knowledge or skills could adversely affect your study success in higher professional education. A number of degree programmes have therefore issued strong recommendations regarding admission. If you completed an MBO programme without a level designation, contact the CSA to find out whether you're eligible for admission. Check the [CSA guide](#) for more information.

### 2.3 HBO first-year or WO-first-year diploma, HBO or WO Bachelor's degree certificate, or Associate degree certificate

You are eligible for admission if you hold an HBO or research-oriented higher education (WO) first-year certificate, an HBO or WO Bachelor's degree certificate or an Associate degree certificate, provided that there is no deficiency comparable with the subject cluster and/or course requirements applicable to HAVO and VWO diplomas. The CSA will only be able to provide you with this information after you've submitted an application for enrolment through Studielink and uploaded your prior education diploma and list of marks through Studielink. You must do so before 1 June 2026 to give you time to sit a [deficiency test](#) if your diploma does not entitle you to admission, or sit the [entrance exam](#) if the deficiency test does not suffice and there is still time to sit the entrance exam.

## 2.4 Other Dutch diplomas

If you hold a Dutch diploma not mentioned above, a credential evaluation will need to be carried out to determine whether it's equivalent to a Dutch HAVO, VWO or MBO level 4 diploma. Credential evaluations are carried out by the CSA, which also takes any subject cluster and/or subject requirements into account. The CSA will only be able to evaluate your diploma after you've submitted an application for enrolment through Studielink and uploaded your prior education diploma and list of marks. You must do so before 1 June 2026 to give you time to sit a [deficiency test](#) if your diploma does not entitle you to admission, or sit the [entrance exam](#) if the deficiency test does not suffice and there is still time to sit the entrance exam.

## 2.5 Foreign diploma

If you obtained a diploma outside the Netherlands, a credential evaluation will need to be carried out to determine whether it's equivalent to a Dutch HAVO, VWO or MBO level 4 diploma. Credential evaluations are carried out by the CSA. In some cases, advice will be sought from EP-Nuffic. Any subject cluster and/or subject requirements are also taken into account during the validation of a diploma from abroad.

The CSA will evaluate your diploma only after you have submitted an application for enrolment through Studielink and uploaded your diploma, list of marks and, if needed, a certified translation in the [Self-Service tool](#). You must do so before 1 May 2026 to give you time to sit an [entrance exam](#) if you do not meet the requirements and there is still time to sit the entrance exam.

If you wish to gain admission on the basis of a diploma from abroad, you must also meet the language requirements and the additional and further specific prior education requirements for certain degree programmes stated further on in this document.

Our English-language website provides more information on [diplomas from abroad/entry requirements](#). You'll also find a list of the most common accepted diplomas. If your diploma is listed, we will still need to validate your diploma, so you must still upload your diploma and list of grades through the [Self-Service tool](#).

## 2.6 Diploma not received on time

If you've completed your prior education in its entirety but won't receive your diploma until later, ask the Examinations Board of your prior education to provide you with a certified statement and upload it using the [Self-Service tool](#) by 31 August (or 31 January if starting in February). The statement must specify the following:

your full name and date of birth;

- the name and CREBO code (in the case of an MBO programme) of the degree programme;
- confirmation that you've met all educational requirements;
- confirmation that you've obtained the diploma;
- the date on which you obtained the diploma;
- the statement must be signed by the educational institution.

If the date on the original diploma turns out to be after 30 September or 28 February, your enrolment will be terminated.

## 2.7 Specific prior education requirements and other requirements

Additional entry requirements apply for the Music, Electronic Music, Midwifery and Pabo degree programmes:

- For [Music](#) and [Electronic Music](#), you must demonstrate sufficient technical and physical skill and artistic aptitude.
- For [Midwifery](#), you must display, among other things, sufficient aptitude and suitability for practising the profession with regard to your social communication and reflective skills.
- You can find more information on this in the [selection procedure](#).
- For the [primary education teacher-training college \(Pabo\)](#), you will need to demonstrate that you are sufficiently knowledgeable about the subjects of geography, history, and science and technology. To this end, the teacher-training college will organise tests. This applies if you have an MBO-4 (if you have not produced a specific portfolio in preparation for the Pabo) or HAVO diploma. If you have a HAVO diploma, you do not need to do this if the relevant course is included on your final grade list. If you have a VWO, HBO or WO diploma, you do not need to sit these tests. Before starting the teacher-training college programme, you will have one chance to take the entrance exam for each subject, and you must make use of that opportunity. If you pass, you will receive a certificate, a digital copy of which you will need to upload using the [Self-Service tool](#).

If you have not passed the entrance exams before the programme starts, you will still be allowed to start at the teacher-training college. You will have two more chances in the first year of enrolment at the teacher-training college to meet the additional entry requirements. In consultation with the degree programme, you can also choose at the start of the first year of the programme to submit a portfolio instead of sitting a test. If you fail the test or portfolio for one or more subjects, you will be deregistered at the end of the academic year.

Visit [www.goedvoorbereidnaardepabo.nl](http://www.goedvoorbereidnaardepabo.nl) for information on the tests, when they will take place and how you can prepare. For more information, see Section 1.2.3 of the CSA guide.

Additional requirements apply to the following degree programmes:

- For both the full-time and part-time tracks of Sport Studies, a sports medical screening examination is carried out to gain insight into your health to ensure that it is safe for you to undertake the programme. You will need to schedule the sports medical screening examination at the [Sports and Exercise Clinic](#) in Haarlem. If you have already undergone a sports medical examination, please check the [Sport Studies](#) webpage for requirements.

- To attend the teacher-training college, you will need to be able to submit a Certificate of Good Conduct (VOG) to the school board where you will be doing your work placement in order to pursue your programme and, in particular, to complete your work placement (practice-based learning). The VOG is a certificate showing that any judicial antecedents you may have will not be an obstacle to performing a specific task or function in society.

## 2.8 Work requirements when doing a part-time programme

If you wish to pursue a part-time degree programme while working, many degree programmes impose requirements on the work you do. There are fewer classes to attend during part-time programmes, and it's assumed that the degree programme and your work will complement each other. This means, for instance, that you'll be able to complete assignments for the degree programme while you're working. To find out more about the applicable requirements, contact your chosen degree programme.

## 2.9 Work-study programmes

Some degree programmes are offered in a work-study format, in which learning and work are combined. Before you can start a work-study programme, you, Inholland and your employer must enter into a three-way work-study agreement. The programme-specific section of the [Teaching and Examination Regulations \(OER\)](#) sets out the topics that must, at a minimum, be covered by a work-study agreement.

You will be expected to find your own employer or trainer.

If an agreement can't be entered into, or if the agreement is terminated prematurely and no agreement with another employer can be made, you can switch to the full-time version of the programme. If no full-time version is available, you will need to suspend your studies (temporarily or permanently) and/or deregister. To find out more about the available options, contact the degree programme in question.

## 2.10 Primary education teacher-training college(Pabo) lateral entry

Lateral entry is a personalised learning pathway that is suitable for those who have, at minimum, completed a degree programme at a university of applied sciences or research university and who work or want to work as a primary school teacher. It may be that you already have some of the necessary qualities, but you do not have a teaching qualification, or not the right one. This pathway enables you to start teaching right away. You yourself must find a primary school that is willing to enter into the lateral entry pathway with you. Your school board will register you for the assessment procedure at Inholland. More information can be found on our [website](#).

## 2.11 Admission to a Master's programme

To gain admission to a Master's programme, you must in any event hold a Bachelor's degree. If you do not have one, in most cases it will be possible to demonstrate your knowledge, insight and skills at Bachelor's degree level through an intake assessment. Moreover, additional requirements often apply; see Section 1.7 in the [CSA guide](#).

For the Advanced Nursing Practice Master's programme and the Physician Assistant Master's programme, the number of places is set at the national level (by the government). Each university of applied sciences that offers these degree programmes is allocated a specific number of places. There is also a different enrolment procedure for these Master's programmes.

For more information, visit the [Master's programme web page](#).

## 2.12 Language requirement for a degree programme taught in Dutch

If you hold a valid diploma from abroad and wish to take a degree programme taught in Dutch, you must demonstrate that you have a sufficient command of the Dutch language. What matters is not your nationality, but whether you've successfully completed your prior education abroad.

As proof of your Dutch language proficiency, you can present the certificate awarded for passing the state examination in Dutch as a second language, programme II (NT2-II). If you wish to sit the NT2 state examination, please contact [DUO \(the Education Executive Agency\)](#). Bear in mind DUO's examination timetable and the marking period of around six weeks. An NT2 state examination certificate remains valid indefinitely.

It is also possible to submit a certificate of at least an equivalent level for assessment; see Section 1.3.1 in the [CSA guide](#) for details of the certificates concerned.

## 2.13 Language requirement for degree programmes taught in English

If you hold a valid diploma and wish to take a degree programme taught in English, you must demonstrate that you have a sufficient command of the English language. This will not be necessary if you've obtained a HAVO, VWO or MBO level 4 diploma (or equivalent certificate), as your diploma already serves to demonstrate your English language level.

Given that language proficiency deteriorates rapidly, these language certificates may not be more than two years old. If you start your degree programme on 1 September 2026, this means that the certificate must not have been obtained prior to 1 September 2024, unless you can demonstrate that you've successfully completed education in English in the past two years.

Our [website](#) lists the English language qualifications we accept. It also sets out circumstances in which you can obtain an exemption from the language requirement. The Code of Conduct for International Students in Dutch Higher Education is the primary point of reference (see [5.11](#)).

For information on demonstrating sufficient command of English, see also Section 1.3.2 in the CSA Guide.

## 2.14 Entrance exam

If you do not hold a diploma entitling you to admission and will be 21 years of age or older on 1 September (or on 1 February for the February intake), you may sit the [entrance exam](#). The minimum age requirement of 21 may be waived in special cases; see Section 1.4. of the [CSA Guide](#).

However, in order to sit an entrance exam for the September intake, you must have applied through Studielink by 18 June and indicated in your application that you do not meet the prior education requirements. The deadline for the February intake is 5 December. If you pass the exam, you will receive a confirmation of admission, which is institution and programme-specific. This means that the confirmation of admission only provides admission to the degree programme at Inholland University of Applied Sciences for which you have successfully passed the entrance exam.

Should you interrupt your enrolment in the programme or wish to switch to another degree programme later without having obtained your first-year certificate, this may mean that you'll need to sit another entrance exam or another deficiency test to gain admission. Re-enrolling in an interrupted degree programme without sitting a new entrance exam is only possible if your study results over a period of at least six months convincingly confirm the results of the previously passed entrance exam and no negative binding study advice has been given.

A confirmation of admission for the 2026-2027 academic year is valid until 1 September 2027. Detailed information about the entrance exam can be found on the [entrance exam web page](#).

## 2.15 Deficiency test

In some cases, you may sit a deficiency test if you do not meet the subject cluster and/or subject requirements for your chosen degree programme, to demonstrate that you have sufficient knowledge and skills to be able to pursue your chosen programme. In this case as well, you'll receive a confirmation of admission. For more information on HAVO and VWO subject cluster and subject requirements, [click here](#).

For more information, visit the [deficiency test web page](#).



# 3. Intake (study check)

Through the Intake, you will get a better idea of the degree programme. With this, you can determine for yourself whether the programme suits you. You can also find more information under [Intake](#) on the website and in the detailed Intake regulations in Chapter 2 of the [CSA guide](#). Below is an overview of the key points of these regulations.

## 3.1 To whom does the Intake apply?

At Inholland, participating in the Intake is a compulsory enrolment requirement for most full-time Bachelor's and Associate degree programmes, as well as some part-time and work-study programmes. This applies to all applicants, regardless of which country they live in at the time of application. For participating programmes, please see also the overview on the Intake page on the website. Excluded from the Intake are:

- most part-time and work-study programmes;
- degree programmes for which an entrance exam/selection based on additional requirements applies;
- degree programmes with an enrolment quota;
- Master's programmes;
- students who start their programme in a higher year with approval from the Examinations Board.

## 3.2 Compulsory components of the Intake

After registering, you will receive an email containing the link to the Self-Service tool, where you can find out which compulsory Intake components apply to you. Those components will depend on where you live at the time of application:

If you live in the Netherlands

- an online Intake Questionnaire<sup>1</sup>;
- the Intake activity of the programme: after completing the online questionnaire, you will participate in this. You must schedule an appointment for this yourself using the Self-Service tool;
- depending on the programme, a homework assignment: for a number of degree programmes, you'll be required to complete this assignment prior to the activity;
- an Intake recommendation: once you've completed all components of the Intake, the CSA will send you its recommendation by email or post.

---

1 The result of the online Intake questionnaire is a short starting profile describing your strengths, opportunities and points for attention. This profile is part of your Intake activity with the programme and will also be used after you start your studies. More on this can also be found in the [CSA guide](#) under Section 2.6.

The Intake will result in an Intake recommendation. The recommendation is valid only for the academic year for which you have applied. The validity period within an academic year may differ for each compulsory Intake component. For more information, see Section 2.8 of the [CSA guide](#).

If you live abroad

- an online Intake Questionnaire<sup>2</sup>;
- a compulsory online Intake interview with the degree programme: after completing the online questionnaire, you may, depending on the result, be invited for an online interview. Consult the Intake page in the [Self-Service](#) tool to see whether the interview requirement applies to you;
- depending on the programme, a homework assignment: for a number of degree programmes, you'll be required to complete this assignment prior to the activity;
- Intake recommendation: if the compulsory interview doesn't apply to you, you'll receive a recommendation by email immediately after completing the online questionnaire. If the compulsory interview does apply to you, you'll receive a recommendation from the degree programme by email via the CSA.

### 3.3 Higher Education application date vs Intake recommendation and possible enrolment

The consequences of the recommendation you'll receive depend on the date of your first application for a higher education degree programme for the coming academic year.

#### 3.3.1 Intake recommendation: if you applied by 1 May

- **Match - Positive recommendation (possibly with points requiring attention)**  
If you receive this recommendation (possibly with points requiring attention), you may start your programme in September, provided your enrolment file is complete.
- **No match - Negative recommendation**  
If you receive this recommendation, provided your enrolment file is complete, you can start your programme in September. We recommend that you give careful consideration to your choice and why you are not a match.  
Intake recommendation: if you applied between 1 May and 1 August

#### 3.3.2 Match - Positive recommendation (possibly with points requiring attention)

- **No match - Negative recommendation**  
This recommendation can be issued only if the Intake is compulsory for you and your application falls under the exceptions (see [3.4](#)). If you receive this recommendation, provided your enrolment file is complete, you can start your programme in September.  
We recommend that you give careful consideration to your choice and why you are not a match.

---

2 The result of the online Intake questionnaire is a short starting profile describing your strengths, opportunities and points for attention. This profile is part of your Intake activity with the programme and will also be used after you start your studies. More on this can also be found in the [CSA guide](#) under Section 2.6.

The Intake will result in an Intake recommendation. The recommendation is valid only for the academic year for which you have applied. The validity period within an academic year may differ for each compulsory Intake component. For more information, see Section 2.8 of the [CSA guide](#).

- **Negative binding recommendation**

This recommendation is issued if the Intake indicates that you and the degree programme you have chosen are not a match. Since you submitted your first application after 1 May, this recommendation is binding and you cannot start this degree programme.

Your application will be cancelled by the CSA.

### 3.3.3 If you applied between 1 August and 31 August

You won't be able to complete an Intake in time for an enrolment on 1 September.

You cannot be enrolled in a programme for which an Intake applies, unless the Intake is compulsory for you and your application falls under the exceptions in [3.4](#).

## 3.4 Exceptions for applications between 1 May and 31 August

- **Binding study advice after 1 May for the current academic year**

If you have received a binding study advice for the current academic year, you can still apply for a new programme between 1 May and 31 August. You will have to complete the Intake in this case, but will not receive a negative binding recommendation.

- **Switching after having applied for enrolment in a higher education degree programme by 1 May**

If you applied for enrolment in a higher education programme by 1 May, you may switch to another programme after 1 May, provided you do so by 31 August. You will have to complete the Intake for this application, but you will not receive a negative binding recommendation.

## 3.5 Applying in the interim and for the February intake vs Intake

The points mentioned in Sections 3.3 and 3.4 apply only to applications for the September intake. If you apply in the interim (i.e. on or after 1 September) or apply for the February intake and the Intake is compulsory for you, you'll receive a message from the CSA asking you to complete the Intake. See Chapter 2 of the [CSA guide](#) for additional requirements regarding the Intake for students who apply in the interim and for the February intake.

If you apply for the February intake on or after 1 September, you will receive one of the following recommendations (after completing your Intake):

- **Match - Positive recommendation (possibly with points requiring attention)**

If you receive this recommendation (possibly with points requiring attention), you may start your programme in the interim or with the February intake, provided your enrolment file is complete.

- **No match - Negative recommendation**

This applies only to voluntary participation in the Intake. We recommend that you give careful consideration to why you are not a match. If you are nevertheless certain about the programme you have chosen, you may carry on completing your enrolment file.

- **No match - Negative binding recommendation**

This recommendation is issued when a compulsory Intake applies and the Intake indicates that you and the degree programme you have chosen are not a match. This recommendation is binding and means you will not be able to start the degree programme. Your application will be cancelled by the CSA.

If you decide to take another degree programme at Inholland because of the recommendation or for any other reason, always consult [the overview](#) on the Intake page to see whether you must complete another Intake for that programme.

### **3.6 Failure to complete a compulsory Intake**

If you decline to complete a compulsory Intake (or any component thereof), your enrolment in the degree programme that you applied for will be refused. The CSA will communicate this to you by email and post.



## 4. Tuition fees

There are two categories of [tuition fees](#), which incorporate different rates: statutory tuition fees, which are set each year by the government, and institutional tuition fees, which are set by Inholland itself (see Section [4.10](#)).

The tuition fees you pay are determined by law and depend on the degree programme format (full time, part time, work-study), your nationality and previously obtained diplomas. You pay your tuition fees by setting up a direct debit authorisation in Studielink (see Section [4.6](#)).

### 4.1 Statutory tuition fees

To be eligible for the statutory tuition fees, you must meet two conditions:

1. You are in possession of Dutch, Surinamese or Swiss nationality or the nationality of an [EEA country](#), or you have a type II, III, IV, V or type I residence permit with certain conditions. Further information on this can be found on [DUO's website](#).
2. You may not already hold a Bachelor's degree obtained after 1 September 1991 at a government-funded educational institution if you enrol for a Bachelor's programme. You may not already hold a Master's degree if you enrol for a Master's programme or an equivalent examination. You may not already hold any higher education degree if you enrol for an Associate degree programme. Whether you meet these requirements is determined based on the diplomas registered with DUO.

The exceptions will apply to you if:

you have already obtained a degree, but now wish to obtain a degree in teaching or health care for the first time;  
you are taking a second, uninterrupted degree programme, which you started before you obtained your first degree.

The statutory tuition fees for the 2026-2027 academic year starting on 1 September 2026 are as follows:

- Full-time/work-study Bachelor's/Associate degree programme € 2,694
- Part-time Bachelor's/Associate degree programme € 2,253
- Work-study/part-time Master's programme € 2,694

The statutory tuition fees for the 2026-2027 academic year starting on 1 February 2027 are as follows:

- Full-time/work-study Bachelor's/Associate degree programme € 1,572
- Part-time Bachelor's/Associate degree programme € 1,315
- Work-study/part-time Master's programme € 1,572

## 4.2 Institutional tuition fees

If you do not meet the eligibility conditions for the statutory tuition fees, you must pay the institutional tuition fees. Unlike the statutory tuition fees, students only have a right to a limited refund in the event of interim deregistration (see Section [6.6](#)).

The institutional tuition fees for the 2026–2027 academic year starting on 1 September 2026 are as follows:

- |  |          |
|--|----------|
| • Full-time/work-study Bachelor's/Associate degree programme | € 10,360 |
| • Part-time Bachelor's/Associate degree programme            | € 9,976  |
| • Full-time/work-study Master's degree programme             | € 10,360 |
| • Master's of Educational Theory                             | € 9,976  |
| • Part-time Master's degree programme                        | € 9,293  |

The institutional tuition fees for the 2026–2027 academic year starting on 1 February 2027 are as follows:

- |  |         |
|--|---------|
| • Full-time/work-study Bachelor's/Associate degree programme | € 6,043 |
| • Part-time Bachelor's/Associate degree programme            | € 5,820 |
| • Part-time Master's degree programme                        | € 5,421 |

## 4.3 Exceptions to statutory and institutional tuition fees

Do any of the following apply to you?

- Are you holding a board position in the 2026–2027 academic year?
- Have you taken a customised programme and obtained a degree from a predecessor of Inholland University of Applied Sciences in the past?
- Is the certificate you previously obtained equivalent to a Master's degree and was the programme in question a unified government-funded degree programme?
- Are you studying Accountancy and do you only need to complete one national (knowledge) test?

If so, different rules may apply to you. For more information, see Section 1.15.1 in the [CSA guide](#).

## 4.4 Interim changes

If you won't meet the eligibility conditions for the statutory tuition fees until later in the year, you must pay the institutional tuition fees until that time. Conversely, if you no longer meet the eligibility conditions later in the academic year, the institutional tuition fees apply from that time onward. If we've been provided with incomplete data and we discover in the course of the academic year that you've previously obtained a degree, you'll be required to pay the institutional tuition fees with retroactive effect.

## 4.5 Multiple degree programmes

The following rules apply to tuition fees when you are enrolled in two or more degree programmes:

- If you are enrolled in two or more degree programmes subject to the statutory tuition fees, you will always pay the full-time tuition fee, regardless of the programme type. After you have completed your first degree programme, you may complete your second (or subsequent) degree programme at the statutory rate, provided you started this second programme before completing your first programme and the enrolment for your second (or subsequent) programme has not been interrupted.
- If you pay the statutory tuition fees for your first degree programme based on the exception rule (see Section 1.15 in the [CSA guide](#)), you must pay the institutional tuition fees for the second (or any subsequent) degree programme.
- If you are studying at Inholland University of Applied Sciences and are paying the institutional tuition fees, and you intend to pursue a second programme to which the institutional tuition fees apply, you will pay 50% of the current institutional tuition fees for your second programme.

If you enrol in a second degree programme at another educational institution and you pay the statutory tuition fees, you must submit the receipt of payment from Inholland to the second institution. The next steps in the procedure are the same. You can request proof of payment via [Studielink](#) or, if that is not possible, via the Central Student Administration.

## 4.6 Setting up a direct debit mandate in Studielink

### 4.6.1 Paying the tuition fees yourself

You pay your tuition fees by setting up a direct debit mandate in [Studielink](#). If your bank supports digital direct debit authorisation, you can enter your own online banking environment via Studielink and issue the authorisation there. Otherwise, you will need to enter your payment details in Studielink. You can then confirm the mandate straight away. You have a choice of paying the tuition fees either at once or in ten instalments.

If you start in February, you can opt to pay your tuition fees at once or in five instalments. This applies to the remaining months of the academic year of enrolment (February-August 2027). Payment in instalments is subject to a one-off administration charge of €24. Inholland uses standing order details. This means that the direct debit mandate details you confirm for the academic year will be reused in future academic years. However, you can still change your payment details through [Studielink](#) if required. You can only pay by standing order if you have a bank account in a SEPA country.

#### 4.6.2 Someone else is paying your tuition fees

If someone else is paying on your behalf, you must indicate this when entering the payment details in Studielink. You will then receive an email with instructions that you should forward to the person who will be making the payments. You remain personally responsible for your enrolment and payment of the tuition fees at all times. This applies even if a third party undertakes to pay the tuition fees.

If the definitive tuition fee amount hasn't yet been confirmed in Studielink, you can't confirm the mandate straight away. As soon as you can confirm the mandate, you'll receive an email from Studielink automatically. In most cases, this will be within 24 hours.

#### 4.6.3 Your employer is paying your tuition fees

Upload a letter of guarantee if your employer is paying and wishes to receive an invoice. The form for this is available in the [Self-Service tool](#). We'll send an invoice to your employer upon receipt of the completed form. You don't need to do anything else in Studielink.

### 4.7 Collection dates

The collection dates for both the September and February intakes are listed on our [website](#).

### 4.8 Non-payment

If you have arranged a direct debit mandate for payment of your tuition fees and Inholland is repeatedly unable to collect the funds from the IBAN you supplied, and you have repeatedly failed to meet the payment obligations, you must pay the outstanding amount in full at Inholland's first request.

If we are unable to collect a due amount/instalment two or more times, the direct debit process will be terminated and the regular reminder procedure will start. If payment is still not made by then, this may have consequences for your enrolment or re-enrolment. You can also find further explanation of the [Payment and Tuition Fee Conditions for direct debit authorisation](#) on the website and in Chapter 3, section 5 of the [CSA Guide](#).

If you want to continue your studies on 1 September or take another degree programme, all payment arrears, including collection charges, must have been made up by 1 August. If you want to continue your studies in February, all payment arrears must have been made up before 1 January.

### 4.9 Examination fees for external students

As an external student, also referred to as an examination student, you may only sit interim and final examinations. You may not take part in teaching activities, and you have no right to study coaching, thesis supervision or use of Inholland facilities. The examination fees exceed the statutory tuition fees. You cannot pay in instalments, and you are not entitled to a refund in case of interim deregistration.

- Examination fees for external students for the 2026-2027 academic year € 3,466

#### 4.10 Determination of tuition fees

The government determines the amount of the statutory tuition fees for full-time programmes each year. The Executive Board determines the amount of the institutional and statutory tuition fees for work-study and part-time programmes each year. The institutional tuition fees exclude any government contribution. The amount of the institutional tuition fees approximates the average amount of the statutory tuition fees per student, plus the average government contribution per student per year. This forms the basis for the preceding information. See also the ['Tuition Fees Overview 2026-2027'](#) or the page about tuition fees on our website. This overview also recaps the main eligibility conditions for the tuition fee rates, pursuant to Section 7.45 and further of the [Higher Education and Research Act \(WHW\)](#).



# 5. International students

This chapter describes the procedures for EEA and non-EEA students. Any further questions? Send an email to [admissions@inholland.nl](mailto:admissions@inholland.nl).

## 5.1 EEA students

If you have the nationality of a country in the European Economic Area (EEA), you do not need to apply for a residence permit. Studying is deemed a purpose for residence under the EC treaty, and students with EEA nationality may therefore lawfully reside in the Netherlands. Although there is no requirement to register with the Immigration and Naturalisation Service (IND), it may be convenient to register nonetheless given that other bodies, such as banks, could ask for IND registration. If you have Swiss nationality, you are also covered by the EC treaty, even though Switzerland is not part of the EU.

## 5.2 Non-EEA students

If you have Australian, Canadian, Japanese, Monegasque, New Zealand, Vatican, United States, United Kingdom or South Korean nationality, you will need a valid residence permit (verblijfsvergunning or VVR) to enter and reside in the Netherlands.

If you do not have the nationality of an EEA country or one of the above countries, you will need a regular provisional residence permit (Machtiging tot Voorlopig Verblijf, or MVV) to enter and reside in the Netherlands, and you must also apply for residence on the basis of full-time study.

If you need a residence permit for the purposes of studying, you must contact the Central Student Administration (CSA) to start the regular residence permit procedure before coming to the Netherlands. Provided that you have met all the requirements in time, the CSA will apply for the regular provisional residence permit and the regular residence permit for you through a fast-track procedure at the Immigration and Naturalisation Service (IND). Inholland University of Applied Sciences has the power to refuse the sponsorship and not proceed with the application for the residence permit. A residence document must be valid on 1 September for the September intake (or 1 February for the February intake). Detailed information on applying for a regular residence permit based on full-time study, including conditions, costs and deadlines can be found on [our website](#).

## 5.3 Conditions for a residence permit for study purposes

A residence permit for study purposes will be granted on the basis of a residence permit application for the full duration of the degree programme, which may not exceed four years and three months. If you have not yet completed the degree programme upon expiry of this period, the residence permit may be extended for the remaining duration of the degree programme. If required, contact the CSA to extend your residence permit. This is subject to a charge (IND and administration charges). If your residence permit has expired and you come from a country where you were first required to apply for a regular provisional residence permit in order to enter the Netherlands, you'll need to return to this country to reapply for a regular provisional residence permit.

In order to retain a residence permit for study purposes, you must meet a number of conditions each year:

#### **Before the end of the current academic year**

- Sufficient study progress. Pursuant to the Modern Migration Policy (MoMi) Act, you must meet the minimum study progress requirements (i.e. obtain 50% of the possible ECTS) as determined by the [IND](#).

#### **Before the beginning of the new academic year**

- Demonstrate that you have access to sufficient financial resources with which you can support yourself (the amount is determined each year by the IND).
- Demonstrate that you've taken out valid health insurance, such as the proof of extension of your Aon insurance or other student insurance, or proof of Dutch basic health insurance.

### **5.4 Notification to IND of deregistration of students with a residence permit for study purposes**

If you are studying in the Netherlands with a residence permit for study purposes, the IND will immediately be notified of your interim deregistration (in the event of a binding study advice, for example), that you have obtained your degree certificate or that you failed to meet the study progress requirements<sup>3</sup>. This means that Inholland University of Applied Sciences will notify the IND that you are no longer enrolled as a student. This deregistration will end the sponsorship for you.

### **5.5 Consequences for the residence permit in case of a transfer to Inholland**

If you already hold a residence permit for study purposes and transfer from another university of applied sciences, your sponsorship must be assigned to the new educational institution (in this case Inholland). You should submit the relevant application to the CSA. Detailed information on the required application including conditions and deadlines can be found on our [website](#).

### **5.6 Registration in the Personal Records Database in the Netherlands**

Anyone who comes to live in the Netherlands for more than four months is obliged to register as a resident in the Personal Records Database (Basisregistratie Personen, BRP) within five days of arrival. You must do this in the municipality where you live. When registering in the Personal Records Database in the Netherlands, you may be asked to present a 'source document'. This means an authenticated birth certificate. Make sure that you take your birth certificate, a certificate of marital/non-marital status, a marriage certificate or a divorce agreement with you or have these documents sent to the Netherlands.

It's important that you notify the Personal Records Database of any change of address within five days of moving to your new address. The data in the Personal Records Database are linked to IND data and are exchanged with DUO in connection with any entitlement to student finance.

---

3 Unless a student counsellor has determined that there is a defensible reason (see Section [7.3](#)).

## 5.7 Work permit for non-EU/EEA students

If you are not from an EEA country, you may work a maximum of 16 hours per week or for 3 full summer months. Your employer is required to apply for a work permit for a 'working student' for this purpose. You must take out Dutch basic insurance for this.

## 5.8 International Office

The [International Offices at Inholland's locations](#) can answer any practical, non-study-related questions you may have before arriving or just after having arrived in the Netherlands. For instance, they can tell you more about:

- finding a place to live;
- opening a bank account if you've not yet been assigned a citizen service number (burgerservicenummer, BSN);
- applying for a knowledge grant (see Section [5.10](#));
- applying for a work permit (which you may need for your work placement).

## 5.9 Student finance/tuition fee loan

Depending on your age, degree programme and nationality, different qualifying conditions for student finance apply. You can find these conditions on the [DUO website](#).

Recognised refugee students (residence document type III or IV) can obtain information from [DUO](#) or the UAF ([University Assistance Fund](#)/Foundation for Refugee Students) regarding eligibility for student finance similar to the student finance system for higher education.

## 5.10 Knowledge grant

The [knowledge grant](#) is an allowance designed to increase the influx of high-quality international students. The term 'high-quality' refers to students who are set to complete their degree programme at the university of applied sciences within the nominal duration of the programme (meaning that they obtain 60 ECTS per year, excluding any exemptions).

As an international student, you are eligible if you:

- have enrolled for a full-time degree programme at Inholland University of Applied Sciences for the first time and consecutively ensure re-enrolment;
- do not hold the nationality of an EEA country, nor Surinamese nor Swiss nationality;
- must pay the institutional tuition fees; and
- started your degree programme in or after the 2021-2022 academic year (NB: different criteria may apply depending on your starting year).

The scheme forms part of Inholland University of Applied Sciences' Student Support Fund, and a limited budget has been earmarked for knowledge grants. For more information, please send an email to [knowledgegrant@inholland.nl](mailto:knowledgegrant@inholland.nl).

When switching programmes (once only) at the end of the first or second year of enrolment, you'll continue to fall under the scheme if you continue to meet the conditions. That being said, if you switch programmes, you can never receive the grant more than five times for the old and new programmes combined. That is why you will need to apply for the grant annually. More information on this subject can be found [here](#).

### **5.11 Code of Conduct for International Students in Dutch Higher Education**

The Code of Conduct is a joint initiative of the government of the Netherlands and higher education institutions. It consists of agreements concluded by higher education institutions with regard to the treatment of international students, such as agreements on information for these students and the requirements (including language requirements) they must meet to enrol at an institution. The Code of Conduct is published on [www.internationalstudy.nl](http://www.internationalstudy.nl). Or see the [Code of Conduct for Higher Education discussion pictures](#) for a concise visual overview.



# 6. Deregistration or transferring

The following sections highlight several situations regarding deregistration or switching degree programmes. Consider these points carefully at all times:

- From the date on which you were deregistered, you'll no longer be entitled to [student finance](#) and/or a [student travel product](#). You will need to arrange timely cancellation of these yourself.
- Turn to Section [6.6](#) to find out whether your tuition fees will be refunded and what the amount is.
- If you deregister due to personal circumstances, such as a serious illness, and expect to be able to resume your degree programme later in the academic year, you should always discuss your deregistration beforehand with a student counsellor. This is important, as interim enrolments, i.e. enrolments that do not take effect on 1 September, are only possible in special cases.
- Once you are deregistered, you may no longer use your Inholland email or your personal files on the Inholland network. Make sure that you transfer any important documents on time.

## 6.1 Deregistration at the end of the academic year

All students enrolling at a university of applied sciences or research university at the beginning of an academic year enrol for the full academic year (the February intake enrolls for the remaining months of the current academic year). Should you decide against continuing your studies at Inholland in the course of the academic year, you may indicate this through [Studielink](#) from mid-May.

If you withdraw your enrolment or re-enrolment application for the new academic year through Studielink before 1 September, no tuition fees are payable for the coming academic year.

## 6.1 Deregistration on request in the course of the academic year

If you're enrolled on 1 September and would like to deregister in the course of the academic year, you'll be deregistered with effect from the month following your request. See Section [6.6](#) for details on how this could affect a possible refund of your tuition fees. If the deregistration takes effect from June, July or August, you will be deregistered with effect from 31 August.

Deregistration always takes effect on the first day of the month. You must submit your request for interim deregistration through [Studielink](#).

## 6.3 Deregistration by Inholland

You will be automatically deregistered by Inholland in the cases described below with effect from the first day of the month following the decision:

- a binding study advice (see [6.4](#));
- fraud;
- failure to respect the principles and aim of Inholland;
- misuse in respect of the intrinsic nature of Inholland;

- conduct or remarks that suggest a lack of suitability for practising the profession for which the programme prepares the student;
- violation of the rules relating to the smooth running of Inholland.

Furthermore, you may be deregistered if you fail to pay your tuition fees despite having received several reminders.

You'll be deregistered (retroactively) with immediate effect if your enrolment was based on an incorrect status relating to Dutch nationality or foreign national status.

## 6.4 Binding study advice (BSA)

At the end of the first year of enrolment in a full-time, part-time or work-study programme, you will receive a recommendation from the relevant degree programme on the continuation of your studies. A recommendation on the continuation of studies will also be issued at the end of the first year of enrolment in an Associate degree programme. If the study recommendation is negative because you've failed to meet the minimum academic performance standard, you must discontinue the degree programme. This is referred to as a binding study advice (BSA). The full regulations relating to a binding study advice are included in Chapter 7 of the [Teaching and Examination Regulations](#) (TER) for your degree programme. More information on the binding study advice can also be found on [Iris](#).

What does a binding study advice mean in practice?

### What does a binding study recommendation mean in practice?



You may not continue the degree programme – or a programme with the same first-year programme – at Inholland University of Applied Sciences. You will be deregistered from Inholland (see also 6.7) and you'll lose your right to student finance and/or a student travel product.



If you've received a binding study recommendation, you may pursue another degree programme at Inholland or at another institution, unless that degree programme has the same first-year programme. If you switch to another degree programme, you must be eligible for admission to that programme and you must start in the first year. This may mean that you could receive another binding study recommendation.



If you definitely wish to pursue the degree programme for which you've received a binding study recommendation, you may only do so at a different university of applied sciences.

## 6.5 What are the rules for deregistering when you graduate?

When you graduate, you may remain enrolled until the end of the academic year: 31 August. You will then no longer be entitled to a tuition fee refund. This applies even if the first month you are no longer enrolled is June, July or August.

If you graduate in May or earlier, Inholland will deregister you with effect from the end of that month. In this case, you will qualify for a refund of the outstanding tuition fees.

Note! The proposed date for your deregistration has implications for the use of student finance or your student travel product (see also Section [6.7](#)).

The deregistration date upon graduation is determined by the date on which you successfully participated in the last teaching activity or had your final interview. The Central Student Administration (CSA) will process your deregistration as soon as the Examinations Board determines that you've graduated. If you graduate towards the end of a month, you may choose to be deregistered at the end of the next month. If you want to deregister at any other time, you can send a request by email to the CSA. Bear in mind that you should only submit this request if you're completely certain that you've graduated.

The Examinations Board will initiate the award of your degree certificate. Incidentally, a degree certificate will never be awarded without a statement from the CSA to the Examinations Board confirming that all enrolment requirements have been met and there are no payment arrears.

## 6.6 What is the amount of the tuition fee refund?

### 6.6.1 If you pay the statutory tuition fees

If you deregister or your enrolment is terminated in the course of the academic year, you'll need to pay one twelfth of the tuition fees less for each month that you're no longer enrolled, unless you deregister with effect from June, July or August.

If you paid the entire tuition fees in one go or if the total amount collected so far exceeds the revised amount due, the amount paid in excess will be refunded within three weeks of the deregistration being processed. The money will always be refunded to the account from which it had been collected or transferred. The email to confirm your deregistration will state the total amount due for the term of your enrolment. If you're still enrolled in another Inholland programme and you didn't pay or have not yet paid separately for that enrolment, you won't receive a refund.

### 6.6.2 If you pay the institutional tuition fees

If you deregister or your enrolment is terminated in the course of the academic year, you'll receive a limited refund or no refund at all of the tuition fees.

If you started on 1 September, in the event of interim deregistration in the months:

- September through February, you will be liable to pay tuition fees until 1 March;
- March through May, you will be liable to pay tuition fees until the end of the month in which you are enrolled;
- June, July or August, you will be liable to pay tuition fees until 31 August.

If you started on 1 February, you will be liable to pay tuition fees until 31 August in the event of interim deregistration.

If you deregister due to personal circumstances acknowledged as substantial by Inholland (force majeure) and have discussed this with a student counsellor, you may be deregistered earlier and could be granted a refund, depending on the student counsellor's recommendation.

If you deregister in the interim due to a binding study advice or because you have graduated, you will no longer be liable to pay tuition fees for the remaining months with effect from the first month you are deregistered, unless you deregister with effect from June, July or August. A refund will not be granted if you're still enrolled in another degree programme at Inholland University of Applied Sciences and you have not or not yet paid for enrolment in that particular programme separately.

If it's possible to obtain a refund, it will amount to one twelfth of the tuition fees owed for each month in which you're no longer enrolled, unless you deregister with effect from July or August. In this case, no refund will be possible.

### 6.6.3 In the event of death

If a student dies in the course of the academic year, one twelfth of the tuition fees paid will be automatically refunded for each month following the death to the account number from which the tuition fees were originally collected.

## 6.7 Consequences of deregistration

### 6.7.1 At Inholland

After your deregistration, you'll no longer be entitled to:

- access to Inholland's facilities;
- attend lectures;
- access to your student account;<sup>4</sup>
- software licenses.

---

4 **Note!** You'll no longer have access to your emails, either. You should therefore make sure to save important documents to your own PC/laptop in time.

### 6.7.2 For your student finance

With effect from the first day of the month in which you've deregistered, you'll no longer be entitled to student finance. You're responsible for notifying DUO via the [DUO website](#) that you'd like to cancel your student finance arrangement.

### 6.7.3 For your student travel product

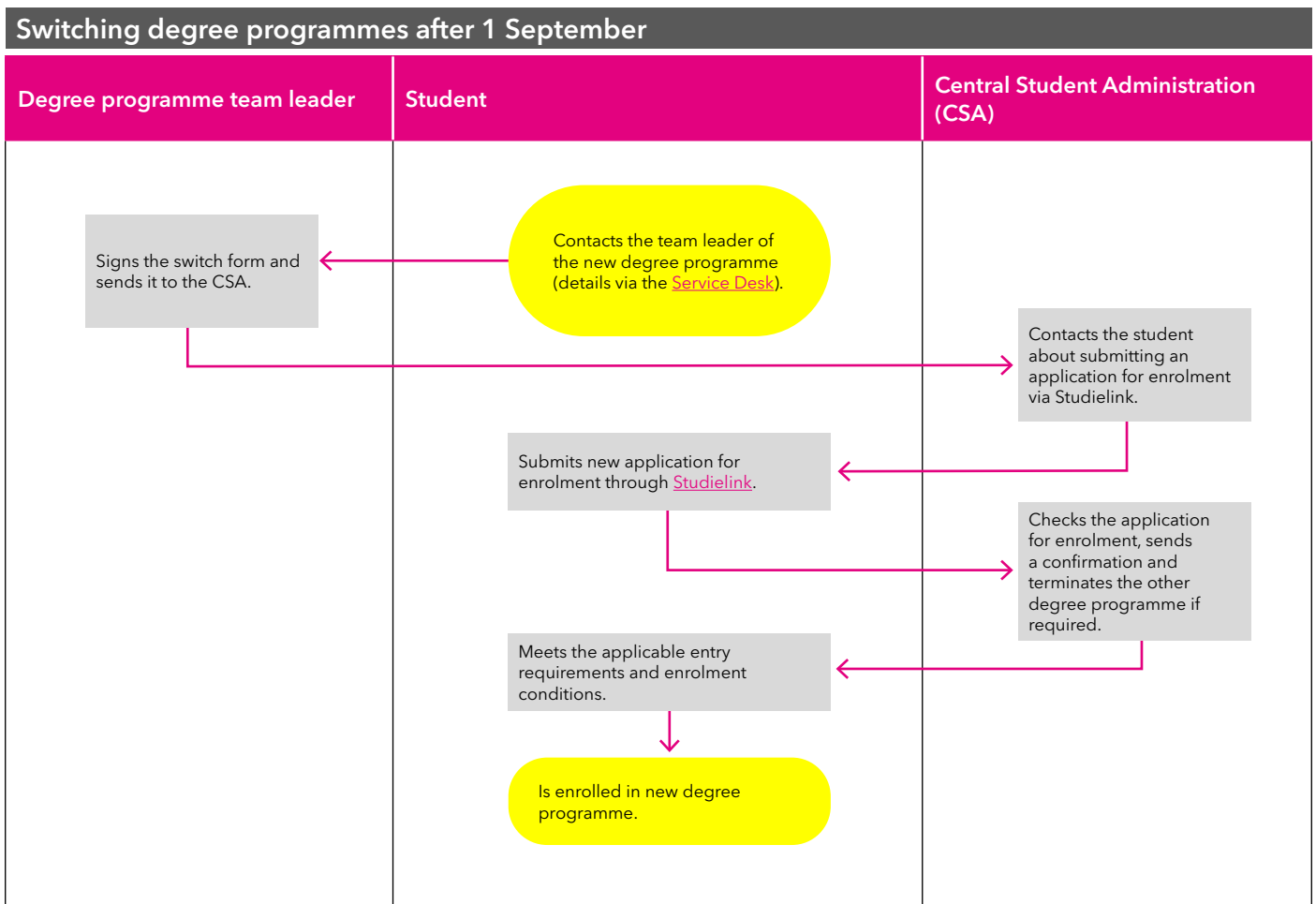
You're also required to cancel your student travel product no later than the tenth day of the first month in which you're no longer entitled to student finance. During those ten days, you may not use your student travel product when travelling using public transport. If you do use it, you could receive a penalty from the public transport company. The full regulations concerning activating and cancelling your student travel product are available on the [DUO website](#).

### 6.7.4 For your residence permit

If you've been granted a residence permit entitling you to study in the Netherlands, you will lose your right of residence as soon as you deregister (see also Chapter [5.3](#)).

#### Switching degree programmes

If you want to switch to another degree programme (or location) in the course of the academic year, follow the steps below:



points for attention:

- If you switch from a full-time to a part-time degree programme, you're no longer entitled to student finance and a student travel product from the date on which your first enrolment ends.
- If you switch from a part-time to a full-time degree programme, you must pay the difference in part-time and full-time tuition fees.
- You could incur a study delay as a result of the different structure of the degree programme or due to the unfavourable timing of switching.
- You must meet all the entry and enrolment requirements that apply to the new degree programme. In many cases, you are required to have a positive Intake recommendation if this follows from the regular Intake rules.



# 7. Complaints and disputes

If you disagree with a decision relating to enrolment, deregistration or the tuition fees to be paid or refunded, you may lodge an objection and subsequently lodge an appeal, if necessary.

## 7.1 Objection procedure

The notice of objection must be addressed to the Executive Board of Inholland University of Applied Sciences and submitted to the Disputes department ([geschillen@inholland.nl](mailto:geschillen@inholland.nl)). The notice of objection will be processed by the Objections Advisory Committee. The notice of objection must be submitted within six weeks after the decision has been issued by the Central Student Administration. The relevant information will also be set out in detail in the letter or email containing the decision.

## 7.2 Appeal procedure

If you disagree with the decision on your objection, you have the option to appeal this to the [Council of State](#). If possible, you should do this through the [Secure Mailing](#) option it offers. Any notice of appeal must include at least the following contact details: name, address, telephone number and email address. More information can be found on the website of the Council of State. The notice of appeal must similarly be submitted within six weeks of the Executive Board's decision.

## 7.3 Student counsellor

If you're enrolled as a student and are considering starting an objection or appeal procedure, we recommend that you contact a student counsellor at your Inholland [location](#) first (See Contact > Student counsellor). Student counsellors offer assistance to students who may have incurred a study delay due to [personal circumstances](#) such as illness, family circumstances, studying with a disability or mental health issues. The student counsellor will discuss with you what you need to make the most of your studies. If any personal circumstances apply, it's important that you notify a student counsellor as soon as possible. Particularly in the first year, when you must meet the [BSA standard](#), it's vital that you don't delay reporting your circumstances.